

Diving into Mastery

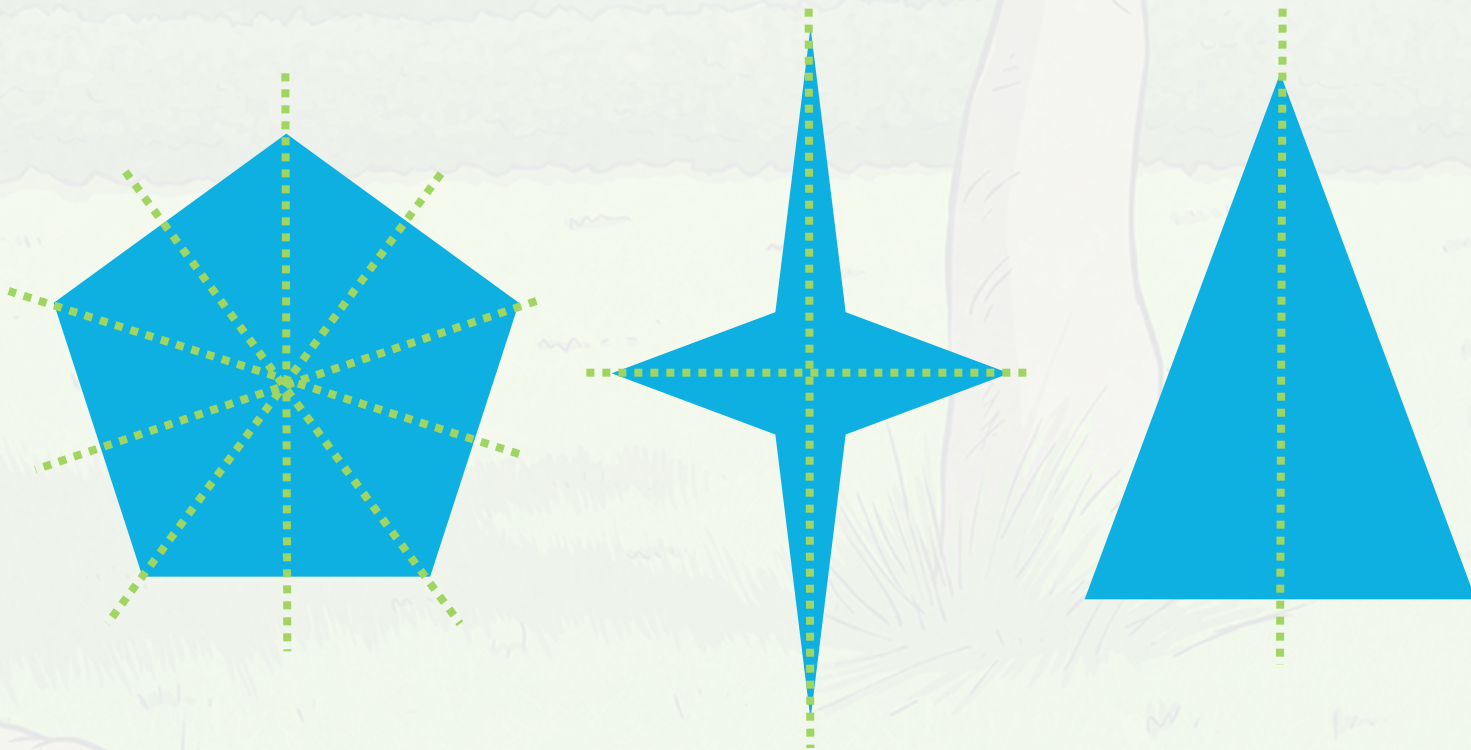


Lines of Symmetry

twinkl

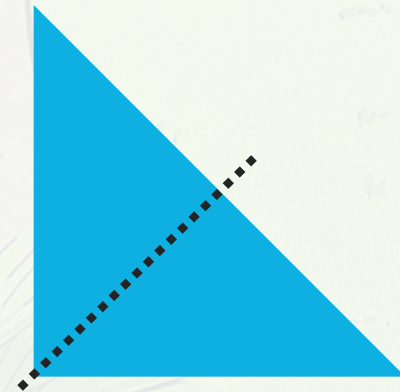
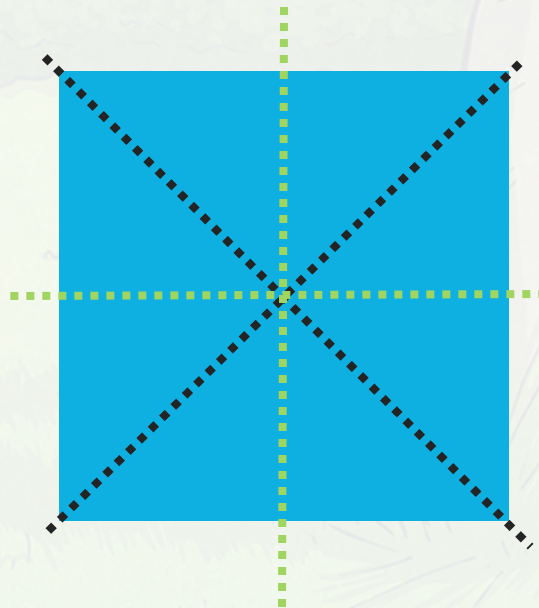
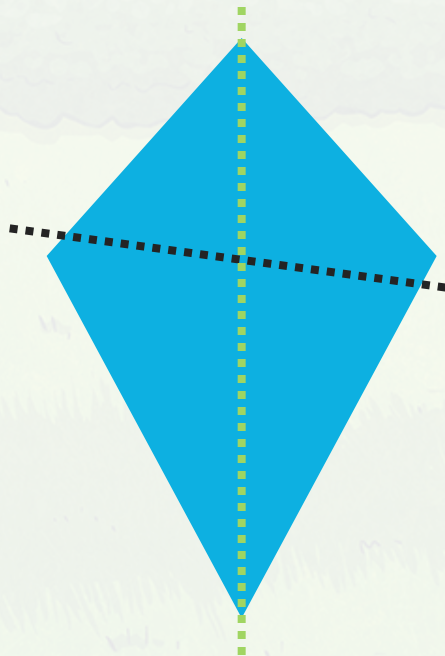


Identify the lines of symmetry in these shapes.





Are these lines of symmetry all correct?
Are any missing?





Are these statements always, sometimes or never true?

- A pentagon has five lines of symmetry.

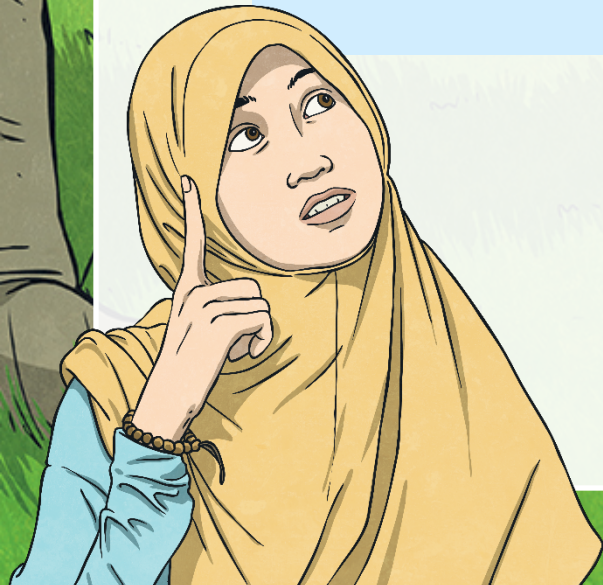
Sometimes

- A square has four lines of symmetry.

Always

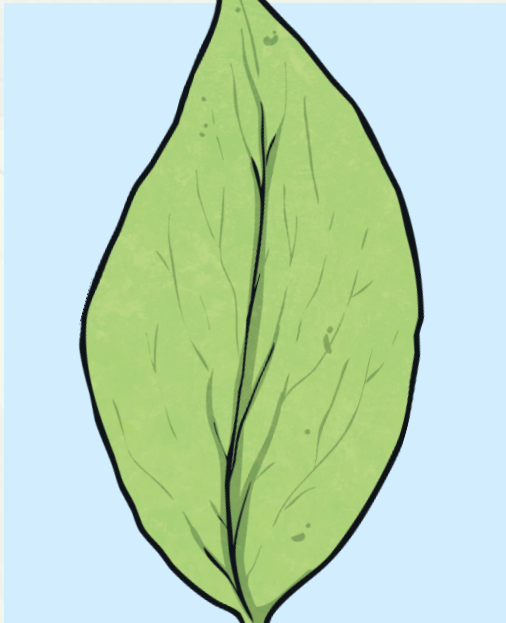
- A scalene triangle has three lines of symmetry.

Never





Why is this shape **not** symmetrical?



Because the leaf curls in one direction, it does not have reflective symmetry.

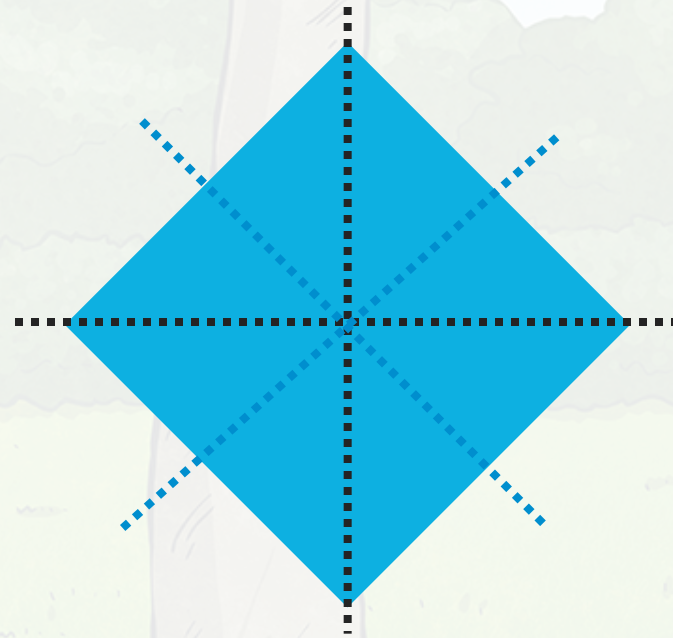
If we looked with a mirror, it would not be the same on both sides.

Lines of Symmetry

Deeper



Shapes with both a horizontal and vertical line of symmetry always have diagonal lines of symmetry, just like this one here.



Is Anja correct?

No, here are some examples of shapes with vertical and horizontal lines of symmetry but no others:

