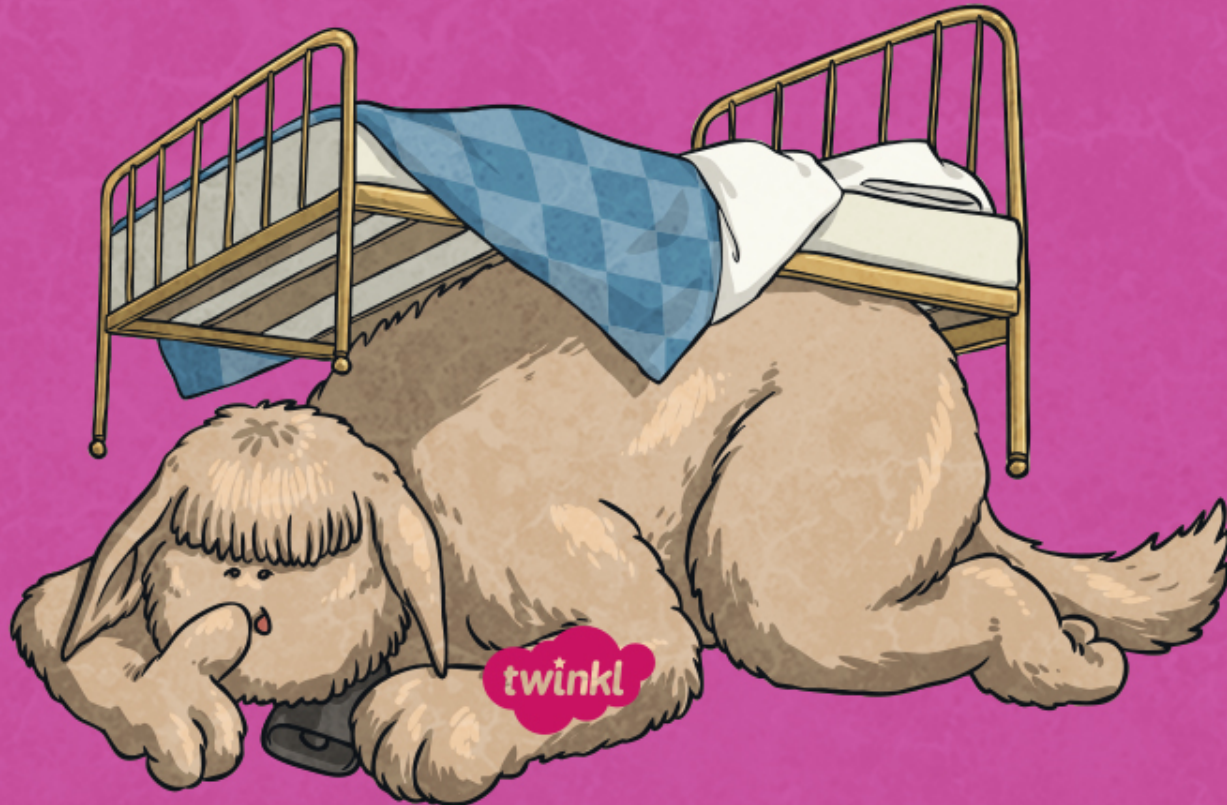


# Subordinating Conjunctions:

What Is a Subordinating Conjunction?



# Aim

- I can recognise and use subordinating conjunctions.

# Success Criteria

- I can recognise that subordinating conjunctions are used to create subordinate clauses.
- I know that subordinate clauses are used within complex (multi-clause) sentences.
- I can use 'I SAW A WABUB!' to remember the main subordinating conjunctions.
- I can write my own complex (multi-clause) sentences using different subordinating conjunctions.

# Getting Started

## What is a conjunction?

A conjunction links two or more words, phrases or clauses together.

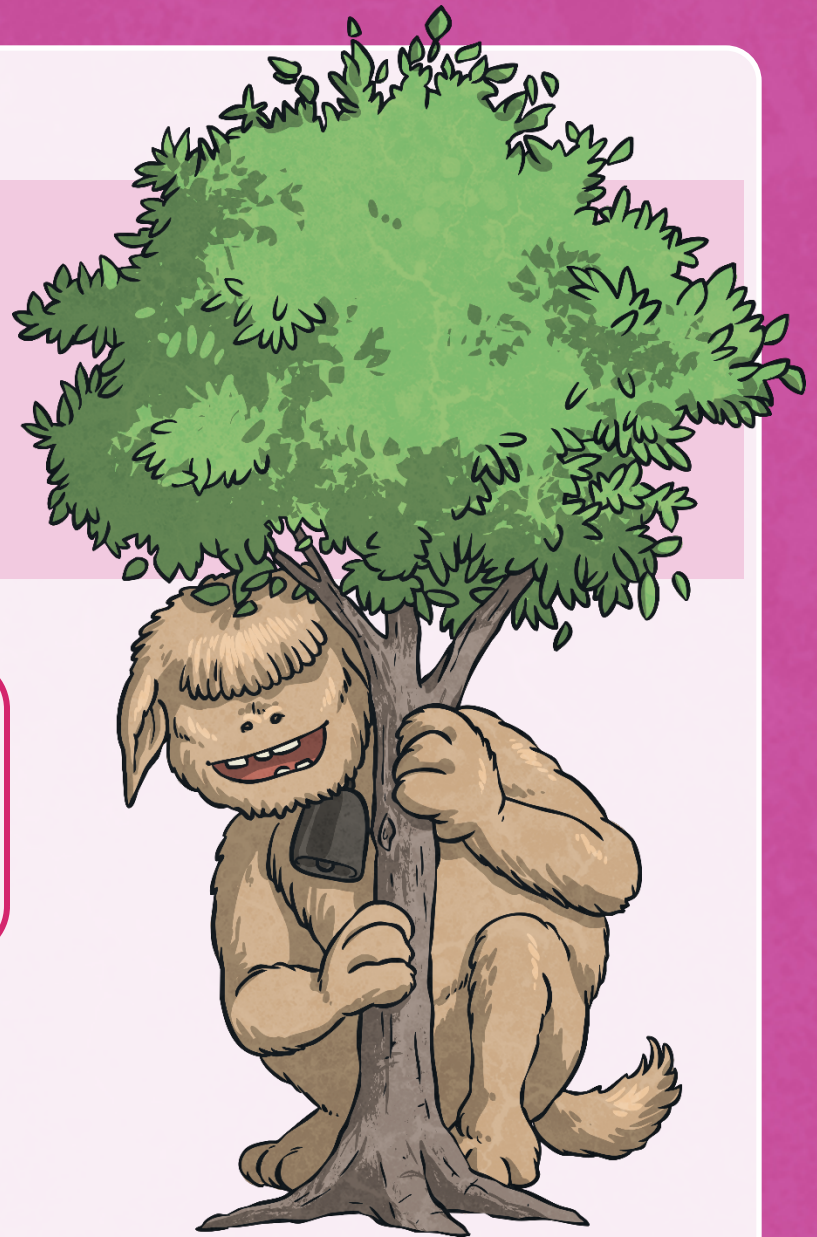
There are **two** main types of conjunctions we use within sentences.

Do you know what they both are?

- **co-ordinating conjunctions** (e.g. *and*) link two main clauses together as an equal pair to create a compound sentence. We usually remember these words using the acronym 'FANBOYS'.
- **subordinating conjunctions** (e.g. *when*) introduce a subordinate clause. You can remember some of the most useful subordinating conjunctions by...

...spotting one of the rarest monsters on the planet, a wabub, and shouting...

**I SAW A  
WABUB!**



# I Saw a Wabub...

...is an acronym to help you remember the first letters of some of the most important subordinating conjunctions.

If

Sinc  
e

As

When

Although

While

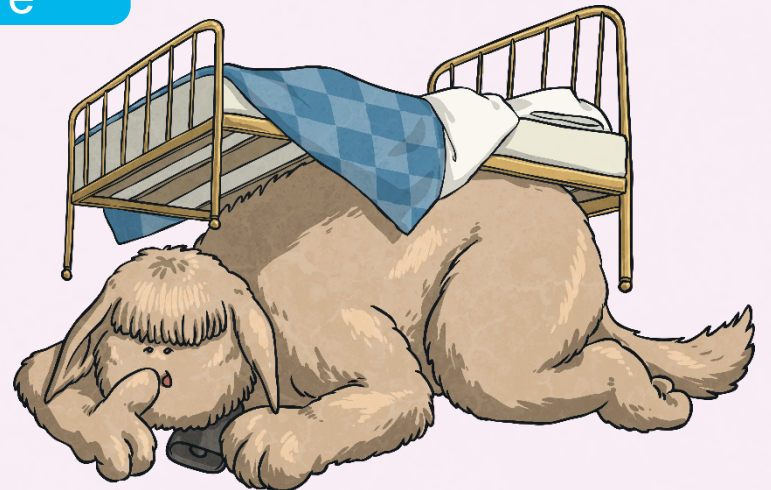
After

Befor  
e

Until

Becaus  
e

I SAW A WABUB!



# Next Steps

So, how do we use subordinating conjunctions?

Subordinating conjunctions are the first words within a subordinate clause. Subordinate clauses do not make sense on their own but when they are used with a main clause, they create a complex (multi-clause) sentence.

Subordinate clauses will always have a subject and verb within them, e.g.

after she smiled



subordinating  
conjunction



subject



verb

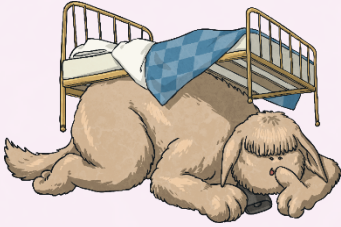
**is a subordinate clause**

after Christmas



Here 'after' is being  
used as a preposition.

**is not a subordinate clause**



# Next Steps

I SAW A  
WABUB!



Can you spot the **subordinate clause** and the **subordinating conjunction** in this sentence?

The eager pupils sped into school  
**when** the bell rang.



# Next Steps

I SAW A  
WABUB!



Can you spot the **subordinate clause** and the **subordinating conjunction** in this sentence?

Whales give birth to live young  
**as** they are mammals.





# Next Steps

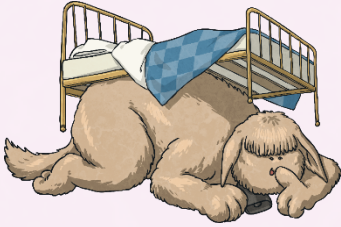
I SAW A  
WABUB!



Can you spot the **subordinate clause** and the **subordinating conjunction** in this sentence?

The hopeless rugby team lost the game **because they hadn't trained.**





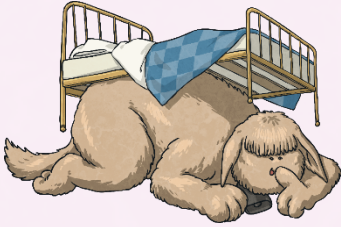
# Next Steps

I SAW A  
WABUB!



In the sentences we have looked at so far, the subordinate clause has always come after the main clause but watch...

**When the eager pup ran, the eager  
spotted pup sped into the school.**



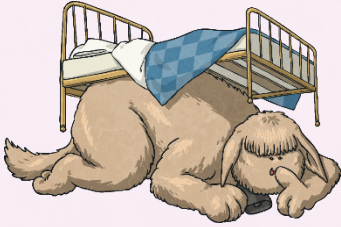
## Next Steps

I SAW A  
WABUB!



**When the bell rang,** the eager pupils sped into school.

Subordinating conjunctions can also be used as the first word in a sentence. When the subordinate clause comes before the main clause, make sure you remember to use a comma to mark where the subordinate clause ends.



## Next Steps

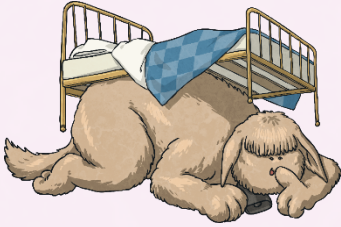
I SAW A  
WABUB!



Can you swap these sentences around so that the subordinate clause comes before the main clause?  
Don't forget your commas!

As whales give birth to live young, whales are mammals.  
they are live mammals.

Because they hadn't been trained, the  
the professional rugby team lost the match.  
t gamed.



# Subordinating Conjunction Hunt

I SAW A  
WABUB!



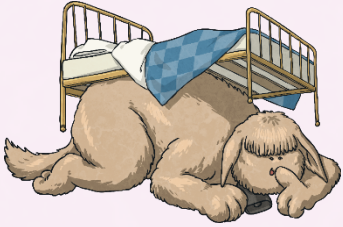
Can you spot the subordinating conjunctions in this piece of text? Where have they been used in these sentences?

**As** he walked closer, Cleo could see the crocodilius in the cave entrance.

The beast was hurriedly eating the remains of its last unlucky victim

**because** it was ravenous. Cleo examined its bright red eyes, huge smoking nostrils and razor-sharp teeth **while** the beast was occupied.

**Although** Cleo was standing quite a distance away, the terrible stench of the gruesome beast was still making him feel nauseous. Cleo took a deep **breath** before he tiptoed bravely forward. It was time for battle.



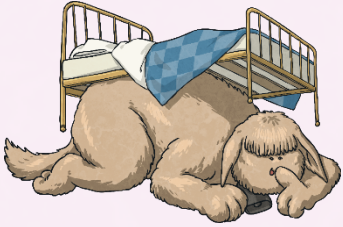
# Practise Your Skills

I SAW A  
WABUB!



Now, it's your turn.  
Which subordinating conjunction would fit best  
at the start of this subordinate clause?  
Is there more than one possibility?

I am sending you a letter \_\_\_\_\_  
I am your biggest fan.



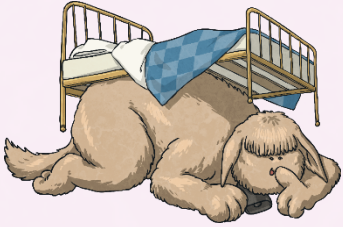
# Practise Your Skills

I SAW A  
WABUB!



Now, it's your turn.  
Which subordinating conjunction would fit best  
at the start of this subordinate clause?  
Is there more than one possibility?

\_\_\_\_\_ I eat lunch, I am going  
to an important meeting.



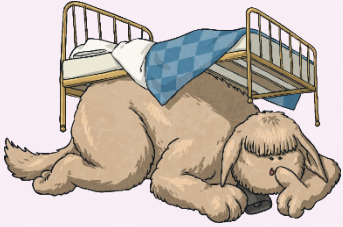
# Practise Your Skills

I SAW A  
WABUB!



Now, it's your turn.  
Which subordinating conjunction would fit best  
at the start of this subordinate clause?  
Is there more than one possibility?

\_\_\_\_\_ he was thrown from his saddle,  
Henry was wary of riding his horse.



# Practise Your Skills

I SAW A  
WABUB!

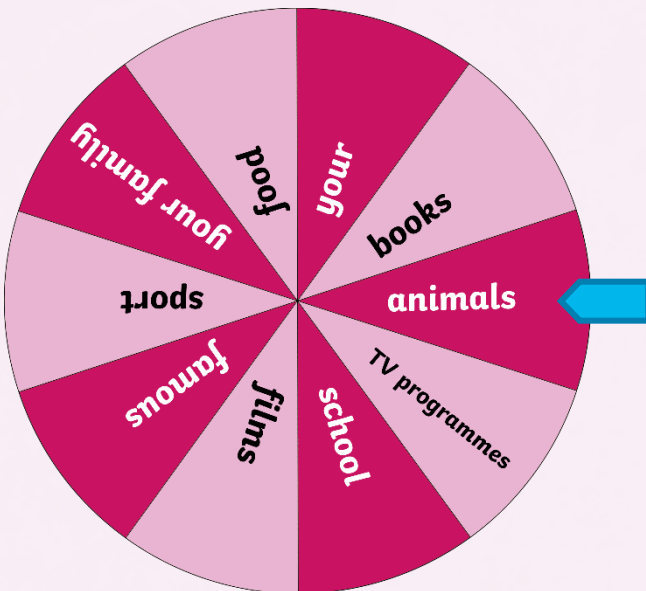


Now, it's your turn.  
Which subordinating conjunction would fit best  
at the start of this subordinate clause?  
Is there more than one possibility?

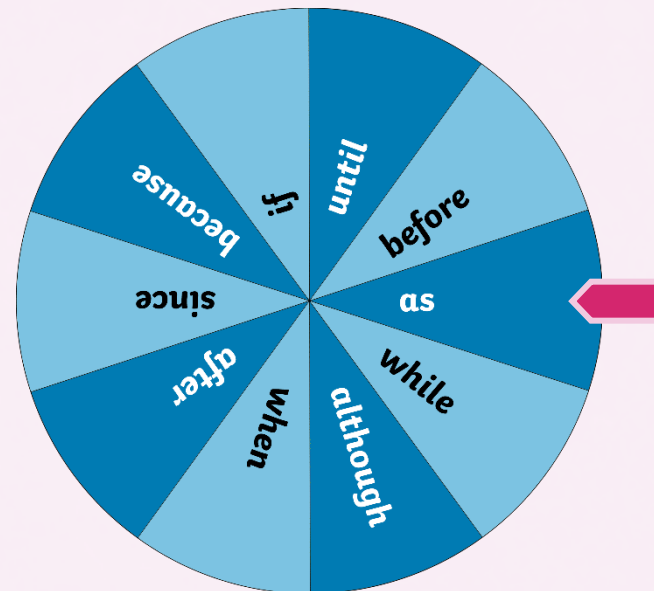
The two chemicals should cause a  
reaction \_\_\_\_\_ you have used  
them in the right quantities.

# Let's Play

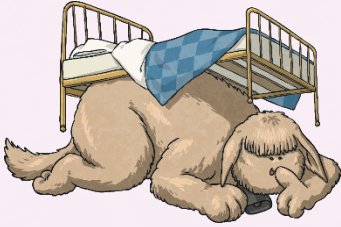
Can you use different subordinating conjunctions accurately in sentences about certain topics? Spin the two spinners to give you a topic and a subordinating conjunction. Write your sentences on a whiteboard. Try and vary the position of your subordinating conjunctions.



Spin



Spin



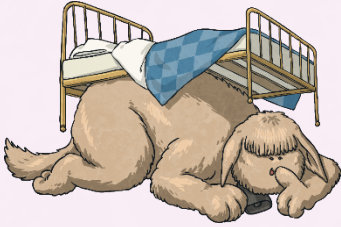
# Quick Quiz: Question 1

I SAW A  
WABUB!



Can you spot the subordinating conjunctions  
in these sentences?

- a) **Until** she tried, Daphne didn't know that she could whistle.
- b) Heavy snow poured from the skies **while** the children made a snowman.
- c) **Although** it was expensive, the couple enjoyed their meal at the award-winning restaurant.



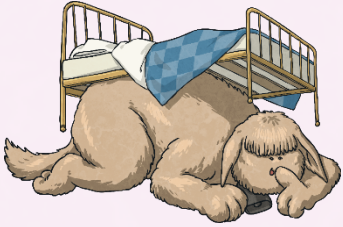
# Quick Quiz: Question 2

I SAW A  
WABUB!



Complete the sentences below by writing the subordinating conjunctions from the box in the correct places to form complex sentences. Use each conjunction only once.

- a) The greenhouse got smashed \_\_\_\_\_ the boys were playing football.
- b) \_\_\_\_\_ they were in trouble, they had to go inside the house.
- c) \_\_\_\_\_ they were well-behaved, they could have their ball back next week.



# Quick Quiz: Question 3

I SAW A  
WABUB!



Can you remember all of the subordinating conjunctions using the 'I SAW A WABUB' acronym?

**I** **S** **A** **W** **A**  
**While** **After** **Before** **Until** **Because**  
**Since** **When** **Although**

# Aim

- I can recognise and use subordinating conjunctions.

# Success Criteria

- I can recognise that subordinating conjunctions are used to create subordinate clauses.
- I know that subordinate clauses are used within complex (multi-clause) sentences.
- I can use 'I SAW A WABUB!' to remember the main subordinating conjunctions.
- I can write my own complex (multi-clause) sentences using different subordinating conjunctions.

