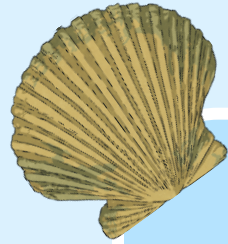


Summer Week 2

Fluency, Reasoning and Problem-Solving

Morning Starter





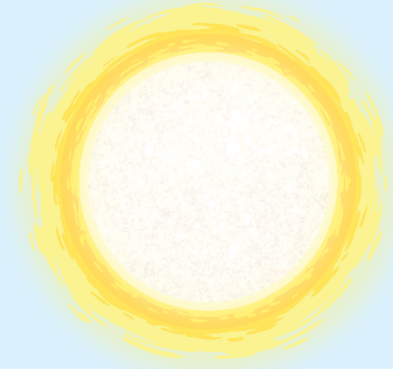
Monday

Tuesday

Wednesday

Thursday

Friday



Place Value

[Reveal answer](#)

Write 7 040 210 in words.

seven million, four
thousand, two hundred
ten.



Calculation/Algebra

[Reveal answer](#)

Use column addition to solve this calculation:

$$1\ 583\ 140 + 593\ 587 =$$



Fractions

[Reveal answer](#)

What number is hidden in these equivalent fractions?

$$\frac{5}{6} = \frac{\quad}{24}$$



Problem Solving

[Reveal answer](#)

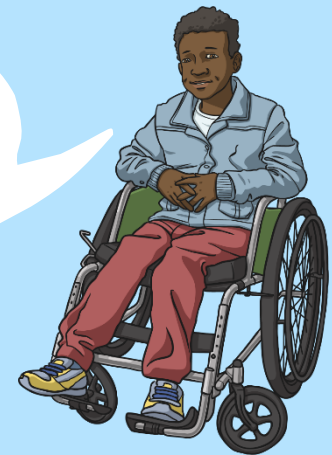
Write a multiplication calculation to match this bar model:

3.42		
?	1.14	1.14

$$1.14 \times 3 = 3.42 \quad \text{or} \\ 3 \times 1.14 = 3.42$$

Reasoning

A cube has a
volume of 8cm^3 .
Each face has an
area of 4cm^2 .



Is Harry correct?

Explain your reasoning.

Place Value

[Reveal answer](#)


Use the correct symbol to compare these numbers:

272 722  272 277

Calculation/Algebra

[Reveal answer](#)


Use a written method to solve this calculation:

$$7\ 339 \times 25 =$$


Fractions

[Reveal answer](#)

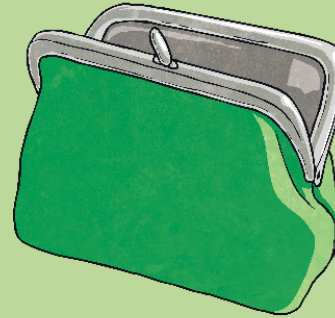
Add together these fractions:

$$\frac{1}{8} + \frac{3}{4} =$$


Problem Solving

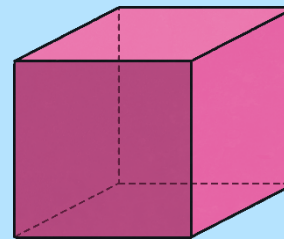
[Reveal answer](#)

Alison has 5 different coins in her purse with a value of 68p. What are the coins?

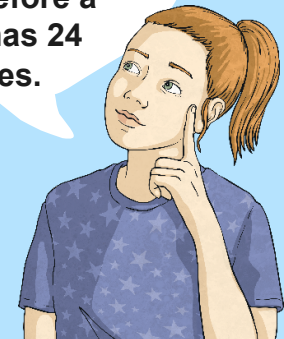


50p, 10p,
5p, 2p, 1p

Reasoning



A cube has 6 square faces. Each face has 4 sides, so therefore a cube has 24 edges.



Is Alison correct?

Explain your reasoning.

Place Value

Reveal answer

Round **10.425** to the nearest **tenth**.



Calculation/Algebra

Reveal answer

Use the order of operations to solve this calculation:

$$36 - 4 \times 5 =$$


Fractions

Reveal answer

Use **greater than** or **less than** to complete this statement:

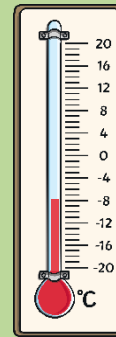
$$\frac{1}{1} \quad \text{beach ball} \quad \frac{5}{6}$$

$$2$$

Problem Solving

Reveal answer

A thermometer reads -8°C . The temperature increases by 21°C . What is the temperature now?



13°C

Reasoning

The number four hundred and sixteen thousand, three hundred and nine has a six in the ten thousands place.

Is Harry correct?

Explain your reasoning.



Place Value

[Reveal answer](#)

Write **CCLXXVI** in numerals.



Calculation/Algebra

[Reveal answer](#)

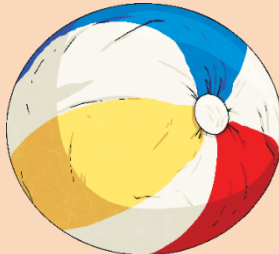
Calculate the answer to this equation when $n = 7$.

$$2n + 12 =$$


Fractions

[Reveal answer](#)

Multiply these fractions:

$$\frac{3}{10} \times \frac{1}{4} =$$


Problem Solving

[Reveal answer](#)

Write the four prime numbers between 10 and 20.



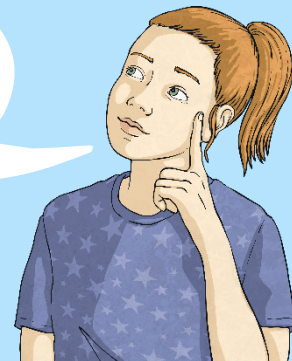
Reasoning

$$? + 275 = 716$$

I can use addition to find the missing number.

Is Alison correct?

Explain your reasoning.



Place Value

Reveal answer

Find the difference between **-0.5** and **0.9**.



Calculation/Algebra

Reveal answer

Find a pair of numbers that will solve this equation:

$$s + 9 = 3t$$

where $s > 8$
and $t < 8$



Fractions

Reveal answer

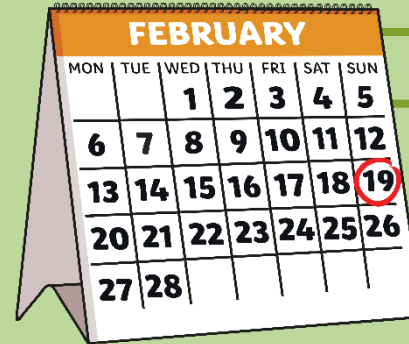
Divide the fraction by the whole number:

$$\frac{5}{8} \div 3 =$$

Problem Solving

Reveal answer

What is the date twelve days after the date ringed on the calendar?



3rd March

Reasoning

$$\frac{5}{8} \div 2 = \frac{5}{4}$$



Is Harry correct?

Explain your reasoning.



twinkl