



**Delta Primary**  
School

# Meet the Teacher Meeting

---

11<sup>TH</sup> SEPTEMBER 2023

# Introductions - Headship Team

---

## **Executive Headteacher**

Sarah Roberts

## **Interim Heads of School**

Bindya Chapaneri

Emma Fowler



# Introductions – Delta Staff

---

Year Group	Class Teacher
Reception Rosen Class	Michelle Williams
Year 1 Kahlo Class	Emine Volkan
Year 2 Mandela Class	Victoria Cannon (Assistant Headteacher)
Year 3 Angelou Class	Arion Lawrence (Assistant Headteacher)
Year 4 Farah Class	Mahadi Kyeyune
Year 5/6 Jemison Class	Patrick Jackson-Hinds (Assistant Headteacher)

SEND Lead
Michelle Williams



# Who are we?

---

- A small, nurturing one-form entry primary school
- Dedicated and talented team
- Engaging and caring children
- Supporting parent and community partnership
- Part of the Connect Education Trust family of schools



**Delta Primary**  
School



Delta Primary  
School

**CONNECT**  
EDUCATION TRUST

# Attendance & Punctuality

---

- A positive and prompt start to the day is important for the whole class in order to feel confident, settled and to achieve their best.
- It is vital your child attends school everyday.
- Whole school target is 96% (6 days)
- The main gate and Reception gate will open at **8:45am** and children will be expected to line up in the playground.
- The class teacher will be waiting and they will take the children into the classroom for Registration.
- The Reception class teacher will greet the children at the door.
- Children arriving **after 9:00am**, will be marked as Late.
- Term time holidays are strongly discouraged.

# End of the School Day

---

- The main gate and Reception gate will open at **3:15pm** and children will be expected to line up in the playground.
- Parents are expected to collect their children promptly.
- The children will be expected to stay with their class teacher in their zoned area and will wait to be dismissed by their class teacher.
- Reception children will be dismissed from their classroom.



# Absent or Sickness

---

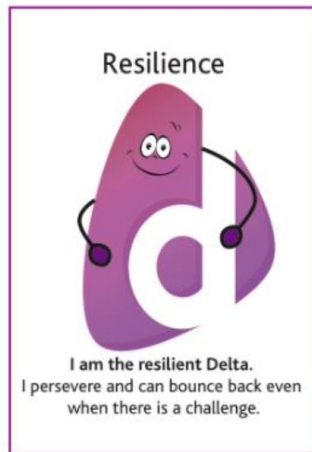
- If your child is too unwell to attend school, call the school office on 020 8351 1784.
- If your child is unwell during the school day, we will contact you immediately.
- 48 hours for sickness and diarrhoea
- If your child a dental or medical appointment, please notify the school via the school office email or by telephone.
- Proof of evidence must be shown to the school office.
- Your child is still able to attend school if they have a cold or cough as long as they are well enough themselves.



# Behaviour for Learning

---


- At Delta, we have high expectations of children's behaviour in the classroom, when moving around the school and at play and lunchtimes.
  - We expect the children to follow the Delta Values – Respect, Resilience, Responsibility and Kindness.
  - Your support is invaluable in ensuring that children know and understand what is expected of them when in school



A **52**LIVES  
**Kind**  
School

# Behaviour for Learning

- We recognise and celebrate positive behaviours wherever they are seen, using them as a model to inspire and share with others.
- Weekly Special Mentions and Always Star Mentions
- Delta Value Stickers
- Kindness Slips and prizes
- Class Dojo Reward System
- Pupil of the Term Certificates



Delta Primary  
School

Note home


---

---

---

---

Date:



**Class Dojo Rewards**

25 points - Note home

50 points - Fancy pencil


75 points - 15min free time pass

100 points - Prize box

150 points - Helper in another class

200 points - Lunch with Sarah

300 points - Special secret prize



Delta Primary  
School

This week's special mention awarded to

---

for

---

Date:



Delta Primary  
School

This week's Always star is awarded to

---

for

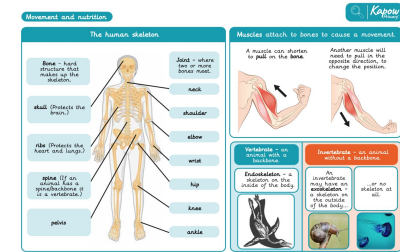
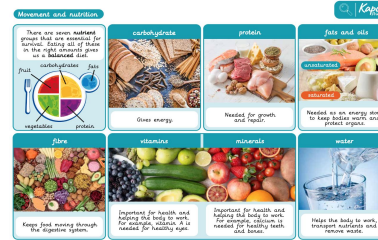
---

Date:

# Choice & Consequence Chart

- The children are expected to model good behaviour for learning. The teachers refer to the Choice & Consequence Chart.





# Knowledge Organisers

- At the beginning of each half term, your child will receive Knowledge Organisers for the curriculum subjects that will be taught. They will be uploaded on Google Classroom.
- The Knowledge Organisers will show you the key vocabulary that will be taught but also key information the children will need to know during the unit of work.



# Home Learning

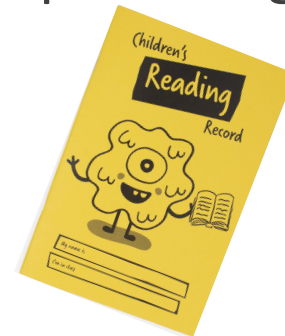
---

- Each week your child will be set written homework, which they will be expected to complete.
- The children will have an English and Maths homework book, which they must take care of and be responsible to look after it with care.
- We expect all children to take pride and neatly present their homework.
- Weekly Spellings
- Weekly Maths and English homework
- Phonics homework (Key Stage 1)



# Reading at Home

- We expect children to read their reading book daily at home for around 20 minutes.
- Reading Book (Book Bag Book)
- Reading book of their Choice for pleasure
- RWI Phonics Reading Book (Early Years and KS1) or reading book set at their reading level (KS2)
- Accelerated Reader on Chromebook
- Your child must bring their Chromebook, Reading book and Reading Record to school everyday.
- Please listen to your child read everyday and record a small comment in their Reading Record.
- Your child will have to look after their Reading book and Reading Record. If this is lost then there will be a small charge to replace it - £5.00 Reading book and 50p Reading Record



# School Uniform



- We expect all the children to wear the correct uniform.
- Long hair must be tied back.
- Jewellery is limited to one pair of small stud earrings and a plain watch.
- If your children does not wear the correct uniform to school, then a phone call will be made and you will be expected to bring it into school.

- Delta Green Jumper or Cardigan
- Delta or plain white polo shirt
- Black trousers (**not jogging bottoms**) or knee length black skirt
- Black or grey tights (girls) Or black or white socks
- Plain black shoes or trainers (**no coloured trainers**)
- Black knee length shorts or Summer checked dress



# Active PE Uniform

---

- Long hair must be tied back
- Jewellery is limited to one pair of small stud earrings and a plain watch
- Active PE Uniform can be worn only on the day your child has PE Lesson



- Delta Green Jumper or Cardigan
- Delta or plain white polo shirt
- Plain black shorts for indoor and plain black jogging bottoms for outdoor
- Black or grey tights (girls) Or black or white socks
- Plain black pumps or trainers (**no coloured trainers**)



# Our Class PE day

---

- Our PE days will be **Tuesday** (outdoor) and **Friday** (indoor).
- Active PE Uniform can be worn only on the day your child has PE Lesson





# School Lunch

---

- This year, all children will be entitled to have a Free School Meal.
- Our caterers are The Pantry.
- Please ensure you login into your Pantry Account and preorder your child's lunch choices, a week ahead so they know what to expect.
- If no lunch order is placed, we can only give a Jacket Potato and beans.
- **Packed Lunches** – if you choose to send your child with a packed lunch, please ensure this is healthy!
- We suggest a sandwich/ wrap, fruit and yoghurt.
- **NO nuts**, fizzy drinks, chocolates or sweets please.



# Breakfast Club

---

- 8.00 – 8.45am (Door closes at 8:15am).
- Cost £1.50 each day (to be paid in advance)
- A healthy selection of breakfast foods are available including cereal, toast and yoghurts.
- Games and Activities.
- Teachers will collect the children at the start of the school day.
- Contact the school office to book a place.



# Being Ready for School

---

- Please ensure your child goes to bed each day at a suitable time
- Wear their correct School Uniform
- School bag and Chromebook ready to bring to school
- Reading book and Reading Record bought in daily
- Please send your child with a named refillable water bottle (**no metal insulated bottles**)
- Healthy Packed Lunch
- Home Learning when it is due into school



# Chromebooks (tbc for Year 1)

---

- In school every day
- Reading - Accelerated Reader
- TT Rockstars
- My Maths
- Monitoring of devices - Weekly spot checks in every class



# Parent Consultations

---

- This year our Parent Consultations will take place in the second half of the Autumn Term.
- Proposed Date is Thursday 16<sup>th</sup> November 2023.
- You will receive a letter as a reminder nearer the time.



# Keeping in Touch

---

- Email ([office@deltapprimary.org](mailto:office@deltapprimary.org))
- Text messages
- Telephone (please ensure we have your most up-to-date number)
- School website ([www.deltapprimaryelt.org](http://www.deltapprimaryelt.org))
- Facebook, Instagram and Twitter - please follow us
- Half Termly Newsletters
- Parent Consultations and reports on your child's progress and attainment
- Executive Headteacher/ Heads of School at the start and end of the day



# We need you.....

---



Can you spare a few hours a week to come and listen to our children read?



Please let us know if you can help.

Speak to your teacher



Follow us on  
Twitter/X  
@DeltaPrimary



Facebook: **Delta  
Primary School  
London**



Instagram: **Delta  
Primary School**



Instagram



Delta Primary  
School

**CONNECT**  
EDUCATION TRUST