



Delta Primary
School

Meet the Teacher Meeting

8th SEPTEMBER 2025

Introductions - Headship Team

Executive Headteacher

Sarah Roberts

Head of School

Bindya Chapaneri



Class Teachers

| Year Group | Class Teacher |
|----------------------------|-----------------|
| Year Reception Kahlo Class | Shannon Cutmore |
| Year 1/2 Mandela Class | Lauryn Melvin |
| Year 3 Angelou Class | James Quinlan |
| Year 4/5 Farah Class | Mahadi Kyeyune |
| Year 5/6 Jemison Class | Victoria Cannon |



Executive School Business Manager

Michelle Baptista

SEND Lead

Danny Neville

PPA Cover

Christalla Zacharia

Support Staff

Rea Charmantzi, Shen Osman Fareeza Hoque, Jamilla Moalin



Admin Team

Senior Administration Officer: Rachel Etere

Business Support Officer: Lisa Gannon

Lunchtime Staff

Katie Prushi; Yostina Dilworth

Premises Staff

Site Manager: Nicola Farndell

Site Cleaner: Caroline Cooper



Attendance & Punctuality

- A positive and prompt start to the day is important for the whole class in order to feel confident, settled and to achieve their best.
- It is vital your child attends school everyday.
- Whole school target is 96%.
- The main gate and Reception gate will open at **8:45am** and children will be expected to line up in the playground.
- The class teacher will be waiting and they will take the children into the classroom for Registration.
- The Reception class teacher will greet the children at the door.
- Year 1/2 Mandela walk through the main playground then the side footpath to the wellbeing garden. The class teacher will greet them and take the children to class.
- Children arriving **after 9:00am**, will be marked as Late.
- Term time holidays are strongly discouraged.



Term Dates 2025 - 2026

| Autumn Term 2025 | |
|---------------------------|--|
| INSET DAY | Monday 1st September 2025 |
| INSET DAY | Tuesday 2nd September 2025 |
| First Day of Term | Wednesday 3rd September 2025 |
| Half Term | Monday 27th – Friday 31st October 2025 |
| Start of Second Half Term | Monday 3rd November 2025 |
| Last Day of Term | Friday 19th December 2025 Finish at 1.30pm |

| Spring Term 2026 | |
|---------------------------|---|
| INSET DAY | Monday 5th January 2026 |
| First Day of Term | Tuesday 6th January 2026 |
| Half Term | Monday 16th – Friday 20th February 2026 |
| Start of Second Half Term | Monday 23rd February 2026 |
| Last Day of Term | Friday 27th March 2026 Finish at 1.30pm |

| Summer Term 2025 | |
|---------------------------|--|
| INSET DAY | Monday 13th April 2026 |
| First Day of Term | Tuesday 14th April 2026 |
| Bank Holiday | Monday 4th May 2026 |
| Half Term | Monday 25th – Friday 29th May 2026 |
| INSET DAY | Monday 1st June 2026 |
| Start of Second Half Term | Tuesday 2nd June 2026 |
| Last Day of Term | Friday 17th July 2026 Finish at 1.30pm |
| INSET DAY | Monday 20th July 2026 |

***INSET Days are subject to change**

End of the School Day

- The main gate, pedestrian gate and Reception gate will open at **3:15pm** and children will be expected to line up in the playground.
- Parents are expected to collect their children promptly.
- The children will be expected to stay with their class teacher in their zoned area and will wait to be dismissed by their class teacher.
- Reception children will be dismissed from their classroom.
- Year 1/2 Mandela will be dismissed from the wellbeing garden.
- All children with scooters and bikes **MUST** walk down the side footpath.





Delta Primary
School

CONNECT
EDUCATION TRUST



Walk, do not ride or scoot on the playground

**We do not allow scooters and
bikes to be ridden on site**

**Children and adults should dismount at
the school gate, walk down the side
footpath to park scooters and bikes.**

**At the end of the day, scooters and bikes
should not be ridden until leaving the
school premises.**

WWW.DELTAPRIMARY.ORG



Delta Primary
School

CONNECT
EDUCATION TRUST

Absent or Sickness

- If your child is too unwell to attend school, call the school office on 020 8351 1784.
- If your child is unwell during the school day, we will contact you immediately.
- 48 hours for sickness and diarrhoea
- If your child has a dental or medical appointment, please notify the school via the school office email or by telephone.
- Proof of evidence must be shown to the school office.
- Your child is still able to attend school if they have a cold or cough as long as they are well enough themselves.



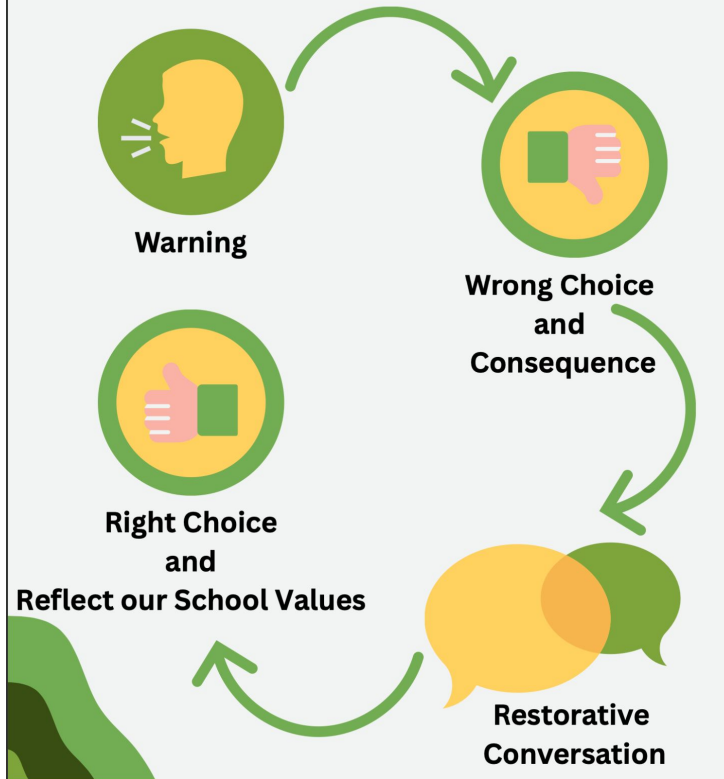
Behaviour for Learning

- At Delta, we have high expectations of children's behaviour in the classroom, when moving around the school and at play and lunchtimes.
- We expect the children to follow the Delta Values – Kind, Responsible, Respectful and Resilient
- Your support is invaluable in ensuring that children know and understand what is expected of them when in school





Behaviour for Learning - Choices and Consequences

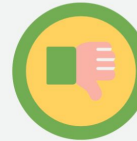


Warning



- Class teacher/ TA gives verbal warning and reminder of making good choices and following our school values
- Class teacher/ TA gives second verbal warning and reminder of making good choices and following our school values

Wrong Choice and Consequence



- Class teacher/ TA explain wrong choice and give a consequence.
- Class teacher/ TA to record on CPOMs
- Class teacher to speak to parents at the end of the day or to contact via telephone

Restorative Conversation



- Class teacher/ TA to have a restorative conversation and explain that right choices have not been made
- Refer to the specific school values that have not been followed
- Head of School to have restorative conversation if a serious incidents occur

Right Choice and Reflect our School Values



- Class teacher/ TA praise right choices and reflect on the school values
- Children exhibit good and positive learning behaviour and right choices
- Recognition and reward through Class Dojo, school value stickers and Notes home

Serious incidents

- Serious incidents report to Head of School
- Hitting, swearing, any dangerous actions. Refer directly to/call Head of School.
- Head of School to contact parents and decide on consequence for serious incidents

List of consequences that can be given

- Time out/ Reflection in the Calm corner
- Moving seats or away from the class
- Minutes off playtime or lunchtime missed
- Time in a partner class for an allocated amount of time
- Head of School to speak to the child and give the consequence



Behaviour for Learning

- We recognise and celebrate positive behaviours wherever they are seen, using them as a model to inspire and share with others.
- Weekly Special Mentions and Always Star Mentions
- Delta Value Stickers
- Kindness Slips and prizes
- Class Dojo Reward System
- Pupil of the Term Certificates



Class Dojo Rewards

- 25 points - Note Home
- 50 points - Fancy pencil
- 100 points - 15 minute free time pass
- 200 points - Helper in another class
- 300 points - Muffin and Hot Chocolate with Bindya

Delta Primary School

Note home

Date: _____

KINDNESS NOMINATION

I nominate: _____

because they: _____

Curriculum Maps & Knowledge Organisers

- At the beginning of each half term, you will be emailed your child's Curriculum Map so that you know what they will be learning.
- Your child will also have access to Knowledge Organisers that are stuck in their class books. These show the key vocabulary that will be taught but also key information the children will need to know during the unit of work.
- Curriculum Maps and Knowledge Organisers will also be available on Google classrooms and the school website.

Movement and nutrition

The human skeleton

Bone - hard structure that makes up the skeleton.

Joint - where two or more bones meet.

skull (Protects the brain.)

ribs (Protects the heart and lungs)

spine (If an animal has a spine/backbone it is a vertebrate.)

pelvis

neck

shoulder

elbow

wrist

hip

knee

ankle

Muscles attach to bones to cause a movement.

A muscle can shorten to pull on the bone.

Another muscle will need to pull in the opposite direction, to change the position.

Vertebrate - an animal with a backbone.

Invertebrate - an animal without a backbone.

Endoskeleton - a skeleton on the inside of the body.

Exoskeleton - a skeleton on the outside of the body.

...or no skeleton at all.

Movement and nutrition

There are seven nutrient groups that are essential for survival. Eating all of these in the right amounts gives us a balanced diet.

carbohydrate

Gives energy.

protein

Needed for growth and repair.

fats and oils

unsaturated

saturated

Needed as an energy store, to keep bodies warm and protect organs.

fruit

vegetables

protein

fats

carbohydrates

fibre

Keeps food moving through the digestive system.

vitamins

Important for health and helping the body to work. For example, vitamin A is needed for healthy eyes.

minerals

Important for health and helping the body to work. For example, calcium is needed for healthy teeth and bones.

water

Helps the body to work, transport nutrients and remove waste.

Home Learning

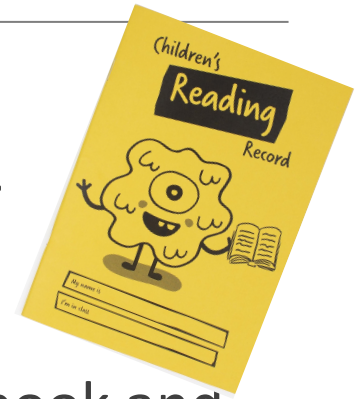
- Each week your child will be set written homework, which they will be expected to complete.
- The children will have an English and Maths homework book, which they must take care of and be responsible to look after it with care.
- We expect all children to take pride and neatly present their homework.
- Weekly Spellings
- Weekly Maths and English homework
- Phonics homework (Key Stage 1)
- TTRS (Time tables)



Reading at Home

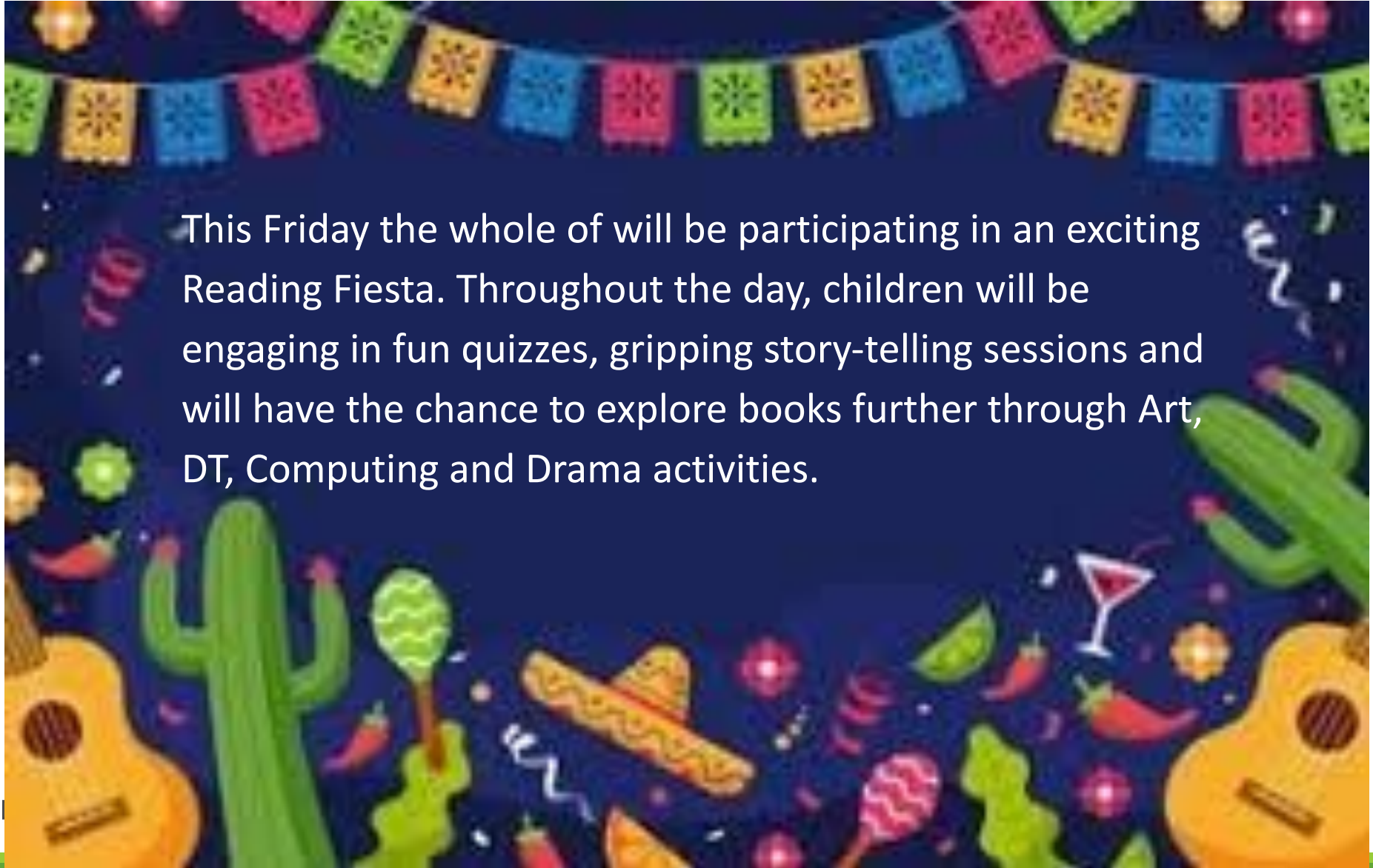
- We expect children to read their reading book daily at home for around 20 minutes.

- Reading Book (Book Bag Book)
- Reading book of their Choice for pleasure
- RWI Phonics Reading Book (Early Years and KS1) or reading book set at their reading level (KS2)
- Accelerated Reader on Chromebook
- Your child must bring their Chromebook, Reading book and Reading Record to school everyday.
- Please listen to your child read everyday and record a small comment in their Reading Record.
- Your child will have to look after their Reading book and Reading Record. If this is lost then there will be a small charge to replace it - £5.00 Reading book and 50p Reading Record

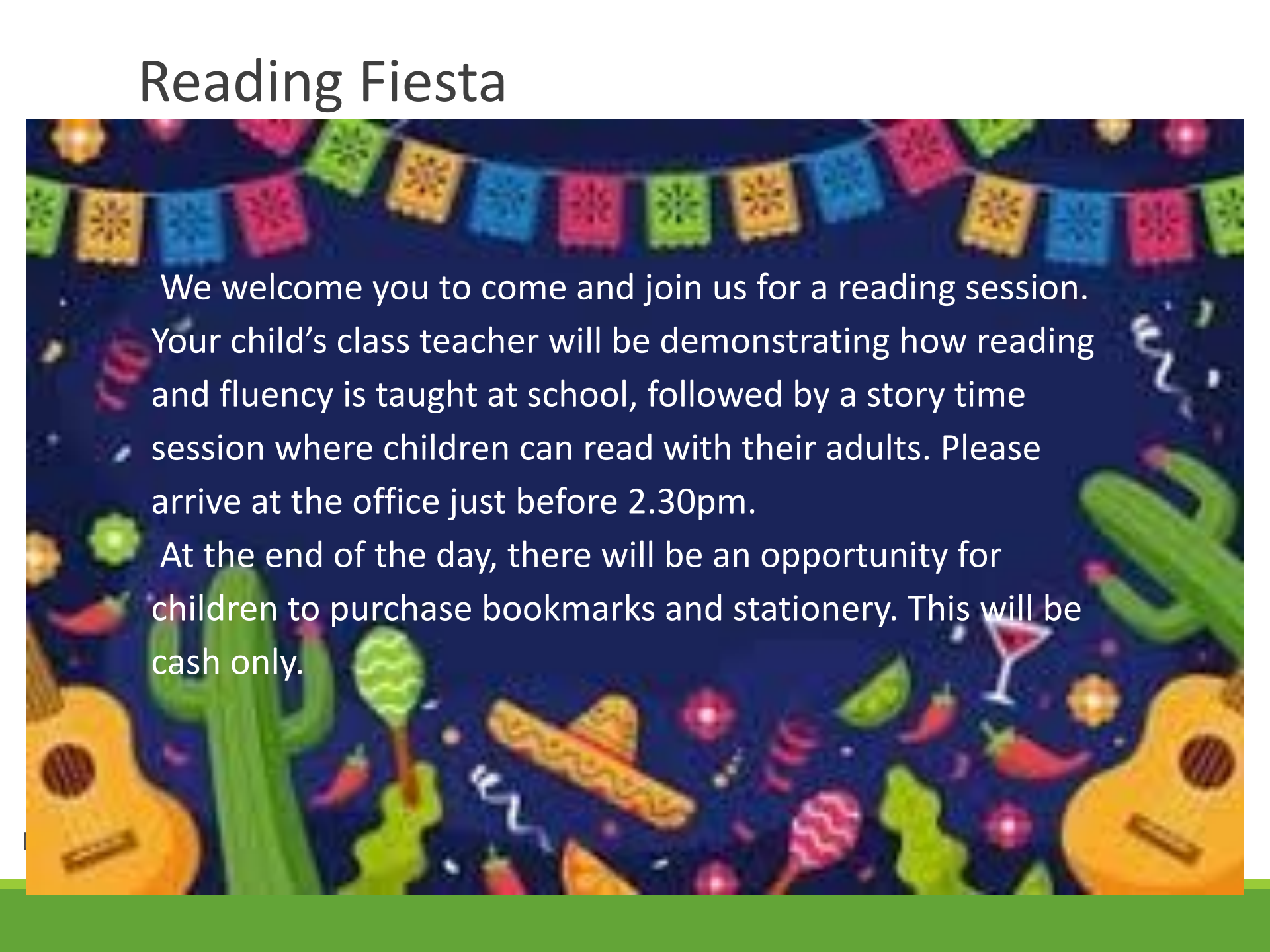


Reading Fiesta

This Friday the whole of will be participating in an exciting Reading Fiesta. Throughout the day, children will be engaging in fun quizzes, gripping story-telling sessions and will have the chance to explore books further through Art, DT, Computing and Drama activities.



Reading Fiesta



We welcome you to come and join us for a reading session. Your child's class teacher will be demonstrating how reading and fluency is taught at school, followed by a story time session where children can read with their adults. Please arrive at the office just before 2.30pm.

At the end of the day, there will be an opportunity for children to purchase bookmarks and stationery. This will be cash only.

School Uniform



- We expect all the children to wear the correct uniform.
- Long hair must be tied back.
- Jewellery is limited to one pair of small stud earrings and a plain watch.
- If your children does not wear the correct uniform to school, then a phone call will be made and you will be expected to bring it into school.

- Delta Green Jumper or Cardigan
- Delta or plain white polo shirt
- Black trousers (**not jogging bottoms**) or knee length black skirt
- Black or grey tights (girls) Or black or white socks
- Plain black shoes or trainers (**no coloured trainers**)
- Black knee length shorts or Summer checked dress



Delta Bookbag or Backpack

Delta book bags and backpacks can be purchased from the school office so that children can show their pride in being a Delta Child!



Reception to Year 2



Year 3 to Year 6



Active PE Uniform

- Long hair must be tied back
- Jewellery is limited to one pair of small stud earrings and a plain watch
- Active PE Uniform can be worn only on the day your child has PE Lesson



- Delta Green Jumper or Cardigan
- Delta or plain white polo shirt
- Plain black shorts for indoor and plain black jogger bottoms for outdoor
- Black or grey tights (girls) Or black or white socks
- Plain black pumps or trainers (**no coloured trainers**)



Our Class PE day

- Active PE Uniform can be worn only on the day your child has PE Lesson



Class PE days



Delta Primary
School

2025 -2026 Autumn PE Timetable

| | Monday | Tuesday | Wednesday | Thursday | Friday | Friday |
|--------------------|--|---------|--|--|--|--|
| Hall | 2.15 - 3.00pm Year R Kahlo Class | | 2.15 - 3.00pm Year 1/2 Mandela Class | 2.15 - 3.00pm Year 4/5 Farah Class | 2.15 - 3.00pm Year 3 Angelou Class | |
| Main Playground | 2.15 - 3.00pm Year 3 Angelou Class | | 2.00 - 3.00pm Year 5/6 Jemison Class | 2.00 - 3.00pm Year 1/2 Mandela Class | 1.15 - 2.15pm Year 4/5 Farah Class | 2.15 - 3.00pm Year 5/6 Jemison Class |



Delta Primary
School

CONNECT
EDUCATION TRUST

School Lunch



- Our caterers are The Pantry.
- Please ensure you login into your Pantry Account and preorder your child's lunch choices, a week ahead so they know what to expect.
- If no lunch order is placed, we can only give a Jacket Potato and beans.
- **Packed Lunches** – if you choose to send your child with a packed lunch, please ensure this is healthy!
- We suggest a sandwich/ wrap, fruit and yoghurt.
- **NO nuts**, fizzy drinks, chocolates or sweets please.

Should you need any further assistance please contact our customer service team on 02088137040 or office@thepantrycatering.co.uk



 @Pantry_uk

 The Pantry UK

 The Pantry (uk) Ltd

 @Pantry_uk

 @ThePantry_uk

After School Enrichment Clubs

- Each term, all class teachers will be running After School Enrichment Clubs, which are all free.
- Your child will be expected to attend each week and follow the school rules, values and behaviour for learning when attending.
- You will receive a letter soon and a Google form link, where you can sign your child up to take part in an After School Enrichment Club.



Being Ready for School

- Please ensure your child goes to bed each day at a suitable time
- Wear their correct School Uniform
- School bag and Chromebook ready to bring to school
- Reading book and Reading Record bought in daily
- Please send your child with a named refillable water bottle (**no metal insulated bottles**)
- Healthy Packed Lunch
- Home Learning when it is due into school



Keeping in Touch

- Email (office@deltaprimery.org)
- Arbor App
- Telephone (please ensure we have your most up-to-date number)
- School website (www.deltaprimery.org)
- Instagram @delta.primaryschool
- Half Termly Newsletters
- Parent Consultations and reports on your child's progress and attainment
- Executive Headteacher/ Head of School at the start and end of the day



Arbor



Delta Primary
School

CONNECT
EDUCATION TRUST



Delta Primary School



Why choose Delta?

Ofsted **OUTSTANDING** in **all areas** (March 2025)

“Pupils’
behaviour is
exemplary”

Ofsted, March 2025

“The school has
designed a highly
ambitious
curriculum for
pupils.”

Ofsted, March 2025

“The school has a
highly aspirational
personal
development
programme”

Ofsted, March 2025

The Quality of Education: Outstanding
Behaviour and Attitudes: Outstanding
Personal Development: Outstanding
Leadership and Management: Outstanding
Early Years Provision: Outstanding

OPEN MORNINGS 2025

Come and see our wonderful school in
action at our drop-in sessions:

WEDNESDAY 22 OCTOBER 9-11am

WEDNESDAY 5 NOVEMBER 9-11am

WEDNESDAY 12 NOVEMBER 9-11am

WEDNESDAY 19 NOVEMBER 9-11am

Contact us: 020 8351 1784

WWW.DELTAPRIMARY.ORG | OFFICE@DELTAPRIMARY.ORG

