

# Growing Up

A task setting PowerPoint about growing and changing





# Growing Up

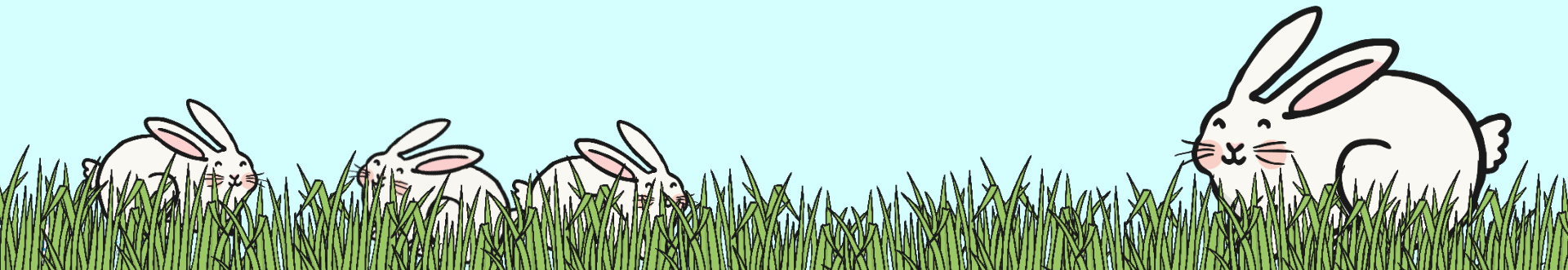
All animals including humans grow and change. They all change in size and weight.

Some animals change a lot as they grow. Their bodies may change shape. They may have different body coverings when they are young to help protect them and this may change to help camouflage them as an adult.

Some animals are born quite helpless. They need to be cared for, fed and protected. Some animals are born ready to be independent. They can walk/swim/fly within minutes of being born.

Some animals stay with their parents for months or years after being born. They are looked after and taught how to survive.

Some animals instinctively know how to survive and don't stay with their parents at all.



The egg is laid by the female penguin. It is then carefully rolled onto the feet of the male penguin who looks after the egg for about 65 days.

The male penguin keeps the egg off the ice, warm and safe.

Once the chick has hatched the male penguin continues to keep the chick warm and safe, and to feed the chick. The baby chick is covered with thick fluffy feathers to help keep it warm. These feathers only change once the penguin is almost fully grown.

The female penguin returns from feeding at the ocean and takes over the role of carer while the male penguin goes to the ocean to get food.





# Humans

Human babies are born unable to care for themselves. They cannot walk, find food or feed themselves. They cannot see very well and can't tell someone what they need. They have to be looked after.

After about a year they are called toddlers and are learning to walk and starting to talk.

Children grow in size, their hair grows and stronger bigger teeth develop. They learn different skills such as balancing, reading and swimming.

Grown ups then start to change again as they get older and older. Their skin becomes softer and their hair begins to thin and change colour, often to grey, and some of their teeth may fall out. Many older people find that it becomes harder to move around as their bones and muscles become more sore.

Photo courtesy of kanike1&pipppa0520&zoompict&serrnorvik&lucidio&[admix(@flickr.com) – granted under creative commons licence - attribution

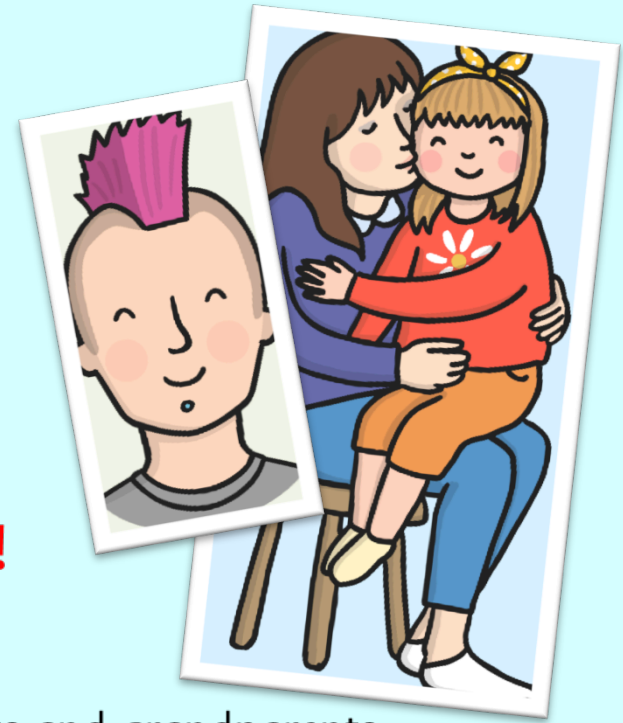
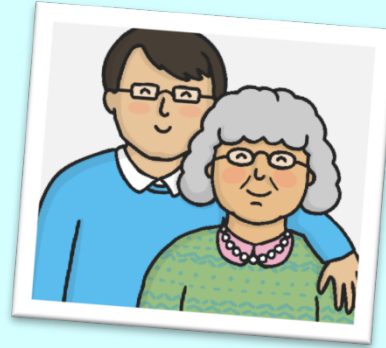


## Giant Panda

Cubs are born hairless and with their eyes closed. They are smaller than a mouse. The panda mother gives great care to her tiny cub, usually cradling it in one paw and holding it close to her chest. For several days after birth, the mother does not leave the den, not even to eat or drink! Panda cubs will need to drink milk from their mothers for about 5 hours everyday. In the wild, mothers will leave their cubs for several hours a day to forage for food, and the babies are completely helpless. Mothers play with their cubs and aid in their development by rolling them around on the ground and tussling with them. By age 2 baby panda bears leave their mothers and begin their lives on their own.

Photo courtesy of [chinaroamer&aussie228430&accwai \(@flickr.com\)](#) – granted under creative commons licence - attribution

# Growing Up



**Extend your learning!**

**At home:**

Look through your family photos and talk to parents and grandparents.

What changes have you gone through since being born?

What could you do when you were born? What couldn't you do?

Who cared for you and how did they do it?

What skills have you learnt now?

How has your body changed to help you learn this skill?

How has your body changed?

What will happen to your body in the next year/5 years/10 years/50 years?

Bring your findings into school to share with everyone.